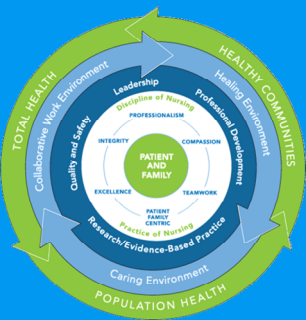


2022 YEAR IN REVIEW

SOUTHERN CALIFORNIA & HAWAI'I NURSING RESEARCH PROGRAM



ENGAGEMENT



KPSC Nursing Research Website
<http://kpsc nursingresearch.org>

10,069 Unique Users

32,069 Page Views

14,362 Unique Page Views



In July 2022, the Academy of Evidence-Based Practice Website was sunset. An EBP Corner on the KPSC Nursing Research Website will host all Evidence-Based Practice related links

AWARDS

7 Local Medical Centers were awarded programmatic status and/or redesignation in 2022:

- Moreno Valley*
- Fontana*
- San Diego
- Ontario
- Woodland Hills*
- Baldwin Park*
- Irvine*

*redesignation

NEW NURSING RESEARCH PROPOSALS

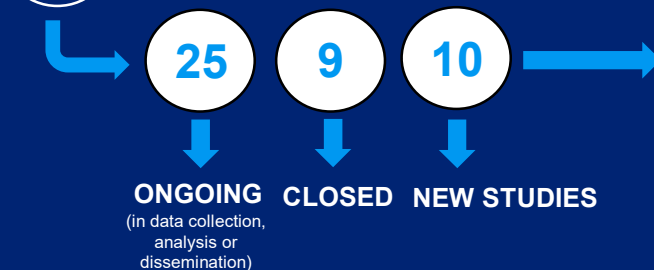
13

10 of the 13 were approved by IRB by the end of 2022

NUMBERS AT A GLANCE



44 Nursing Research Studies in 2022



Of the **10** New Studies:

- 5** AMBULATORY
- 1** HOME HEALTH
- 4** INPATIENT (2 are multi-site studies)



65 CONSULTS

* Can include quality vs research determination, IRB processes, proposal development, analytics and dissemination

COMMUNITY DISSEMINATION



15 Podium Presentations
 * 6 of 15 are research results



37 Poster Presentations
 * 12 of 37 are research results



10 Publications

Of the **10** Publications:

- 7** RESEARCH
- 1** EBP/QI/EXPERT OPINION
- 2** EXTERNALLY POSTED EVIDENCE REVIEWS

<http://kpsc nursingresearch.org/literature-reviews>



7 Virtual Abstract and Poster Workshops

131 Total Attendees
 1 workshop was with community partners
 Azusa Pacific University and MemorialCare

BUILDING RESEARCH CAPACITY FOR ANCC MAGNET® RECOGNITION



82% of the **45** counts of research needed for SCAL/Hi

Magnet® criteria (Nk1, Nk2, and ongoing) are supported/operationalized through studies from the Southern California & Hawai'i Nursing Research Program

97% if student consultations are included

